

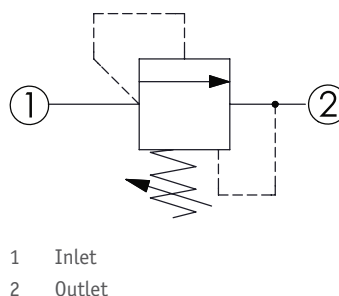
# CRD-10A - Relief valve

Direct acting, pilot stage

## 1 Available versions

Ordering example:

CRD-10A	-21	-A	-L
Type	Operation	Pressure setting	Option



### Operation

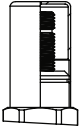
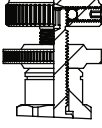
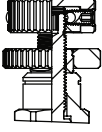
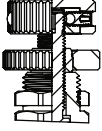
Coding	Description
21	Direct acting pilot stage port 1 to 2 (P to T)

### Pressure setting

Coding	Pressure (bar)	
	Adjustment range	Standard setting
A	1.7 - 210	70
B	1.7 - 105	70
C	1.7 - 420	70
D	1.7 - 55	28
E	1.7 - 28	14
W	1.7 - 315	70

### Option

Coding	Option	Drawing
L	Leakproof hex. socket screw	
LP	Leakproof hex. socket screw, with stainless steel external metal components (Buna-N Seal)	

Coding	Option	Drawing
C	Stainless steel tamper resistant cover	
BA	Handknob and aluminum locknut	
K	Handknob with lock knob	
KF	Handknob with panel mount	

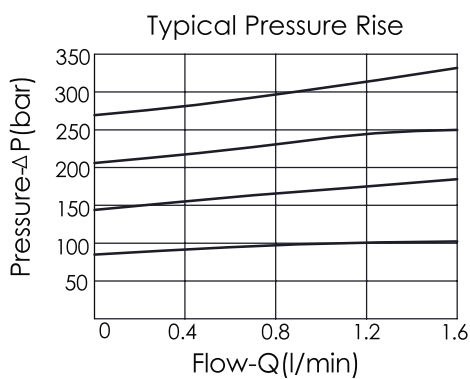
## 2 Technical data

Operating pressure $p_{max}$	350 bar
Flow rate $Q_{max}$	1 l/min
Installation torque	40 - 50 Nm
Cavity	T-10A
Weight	<ul style="list-style-type: none"> <li>▪ L: 0.14 kg</li> <li>▪ KF: 0.15 kg</li> </ul>

### **i** INFORMATION

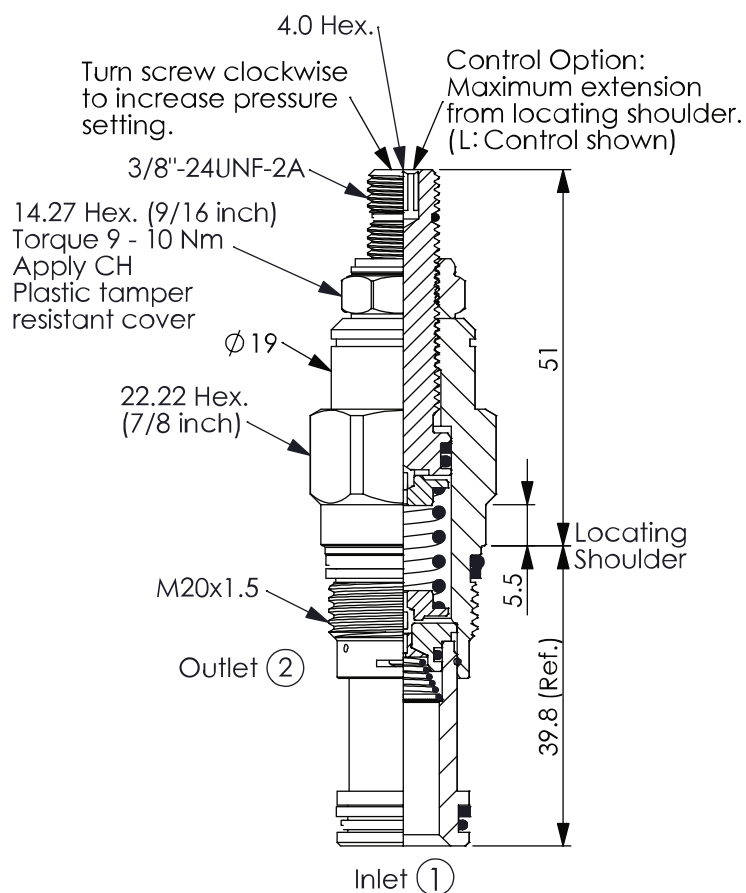
- Response time-typical (2 ms)
- Maximum leakage approximately (5 drops/min to 85 % of nominal setting)
- Dirt tolerant
- Standard orifice:  $\varnothing$  0.7 (If the diameter of orifice needs to be enlarge, please contact HAWE.  
For example: ordering code CRD-10A-21-...-09, the orifice is  $\varnothing$  0.9)

### Characteristic lines



### 3 Dimensions

All dimensions in mm, subject to change.



### 4 Other information

see Technical information HAWE cartridge valves: D 8219

see Recommendation for hydraulic fluid: D 5488/1

